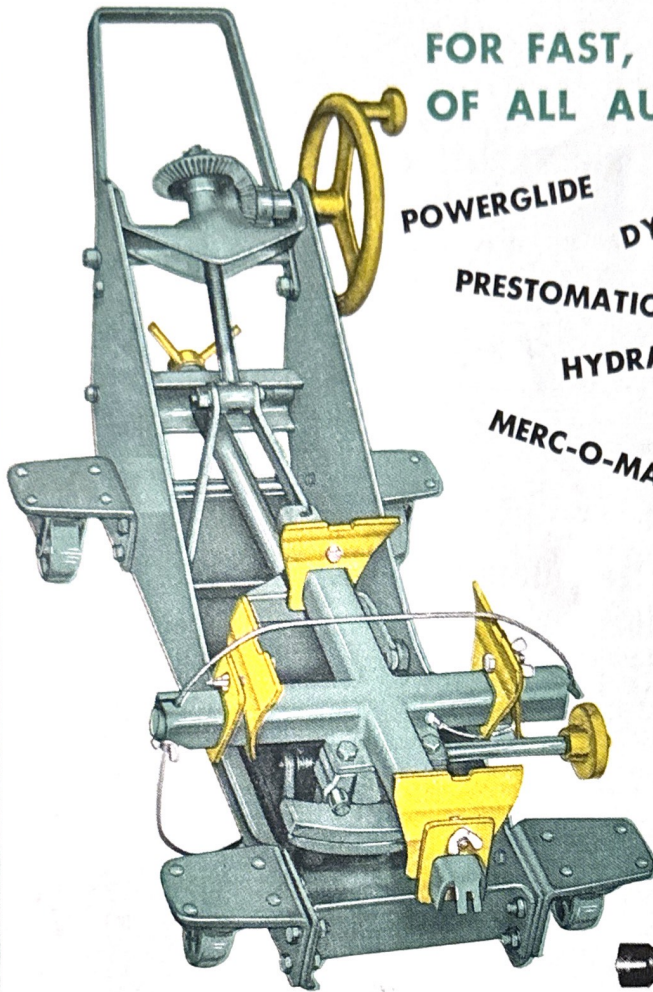


THE "COVERAGE LINE" OF QUALITY JACKS

New **AJAX** Models 34 and 38 TRANSMISSION JACKS

FOR FAST, SAFE ONE-MAN SERVICING
OF ALL AUTOMATIC TRANSMISSIONS



POWERGLIDE

DYNAFLOW

FORD-O-MATIC

POWERFLITE

PRESTOMATIC

HYDRAMATIC

AUTOMATIC DRIVE

MERC-O-MATIC

TIP-TOEMATIC

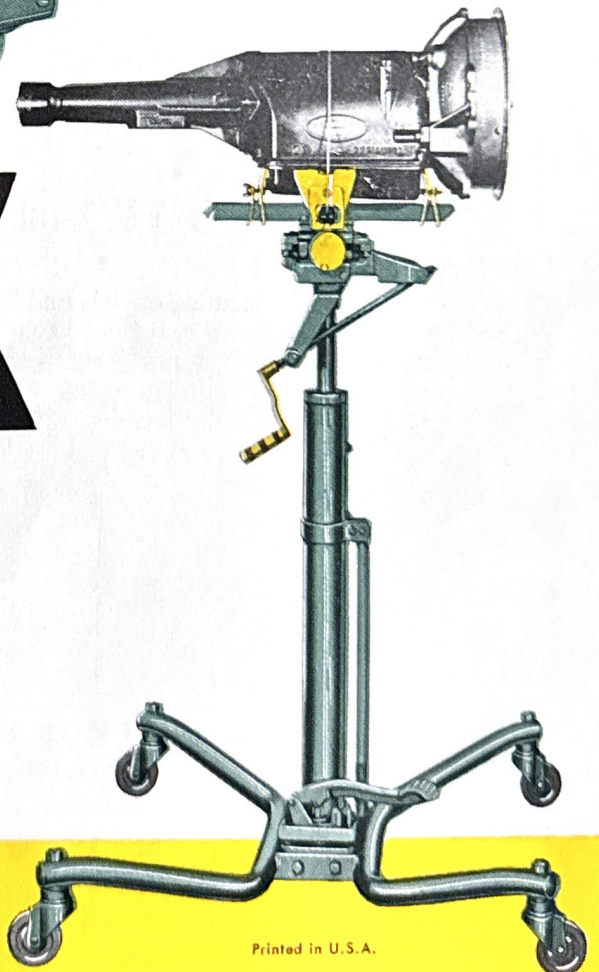
ULTRAMATIC

GYROMATIC

No. 34 FLOOR TYPE
MECHANICAL TRANSMISSION JACK
TILTS . . . RAISES . . . LOWERS . . .
ROTATES ANY AUTOMATIC TRANSMISSION FOR EASY, ACCURATE INSTALLATION OR REPLACEMENT.

No. 38 PEDESTAL TYPE
HYDRAULIC TRANSMISSION JACK
ALL THE FEATURES OF THE FLOOR TYPE MODEL PLUS HYDRAULIC SPEED AND EFFICIENCY FOR UNDER-LIFT AUTOMATIC TRANSMISSION SERVICING.

The Ajax 34 and 38 Automatic Transmission Jacks are supplied complete with Universal Lifting Head Assembly including a full set of adjustable pick-up blades for all automatic transmissions except Chevrolet "Powerglide" for which an Adaptor Head is furnished.



AJAX AUTO PARTS COMPANY
RACINE, WISCONSIN, U.S.A.

New **PEDESTAL TYPE** Model 38 for **UNDER-LIFT** **SERVICING** of All Automatic Transmissions



The Ajax 38 is complete with Universal Lifting Head Assembly including a full set of adjustable pick-up blades for all automatic transmissions except Chevrolet "Power-glide," for which an Adaptor Head is furnished.

Where under-lift servicing of an automatic transmission is preferred, mechanics will appreciate the easy accessibility and hydraulic lifting features provided by the Ajax 38 Pedestal Type Jack. It is hydraulically and mechanically operated to assure micro-accurate adjustments and combines all of the movements necessary for removal and installation of any type automatic transmission.

- **LONG-LIFE HYDRAULIC POWER RAISE** ● The hydraulic lifting unit is built for easy, trouble-proof raising and lowering of the No. 38. Oil tank is integral with the column. The ram is chrome plated and heat treated for long wear and corrosion resistance.
- **EASY-ROLLING, BALL-BEARING CASTER WHEELS** ● All four swivel-type wheels have smooth-acting, ball-bearing caster action and self-lubricating wheel bearings for easy positioning and dollying of the No. 38 on rough or wooden floors.
- **CONVENIENT DOLLYING HANDLE** ● Handy steering handle with serrated grip facilitates easy dollying of the No. 38 and transmission under the lift and about the shop. Handle folds down out of the way when not in use.

AJAX No. 38 SPECIFICATIONS

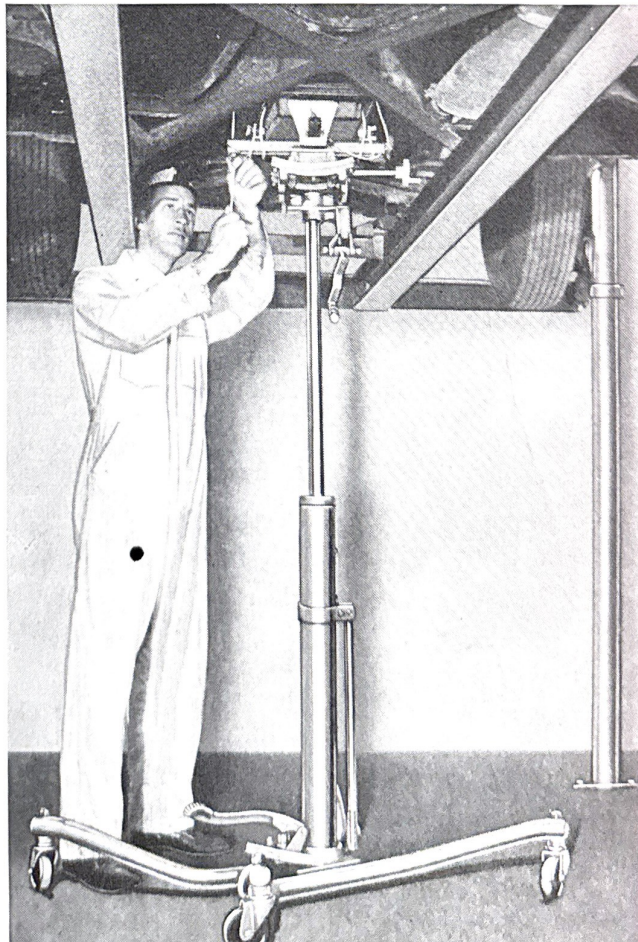
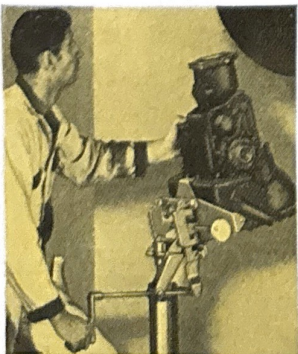
Capacity (Lifting Load) 500 Lbs. • Capacity (Positioning Load) 750 Lbs. • Over-All Length 38" • Over-All Width 38" • Over-All Height (Lowered) 46" • Low Height (At Load Pick-Up Point) 48" • Power Raise 28 $\frac{1}{2}$ " • Maximum Height (At Load Pick-Up Point) 76 $\frac{1}{2}$ " • Wheel Base 35" • Wheel Tread 35" • Wheel Diameter 4" • Maximum Rearward Tilt 18° • Maximum Forward Tilt 80° • Shipping Weight (Complete) 202 Lbs.

LOW-EFFORT FULL LIFTING RANGE OPERATION

All controls are direct-acting, low-effort ratio for ease of operation. Its full 28 $\frac{1}{2}$ " raise to a maximum height of 76 $\frac{1}{2}$ " provides for easy removal from under a lift at the most comfortable working height. Low height of 48" makes transfer of the transmission to the bench an easy one-man operation.

EXTRA-HEAVY "TIP-PROOF" CONSTRUCTION

The extra-heavy welded steel tube quadruple leg base assures maximum stability at full height under load yet leaves working area free for complete access by the mechanic to his work.



THE "COVERAGE LINE" OF QUALITY JACKS

AJAX AUTO PARTS CO.
RACINE, WISCONSIN • U.S.A.